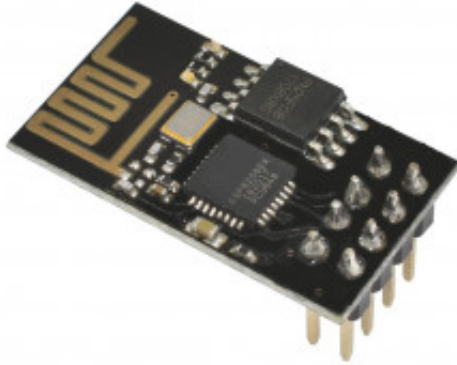


# ESP8266 ESP-01 WIFI Wireless Transceiver



**Produktkode:** 525

**Tilgjengelighet:** 5

**Custom Field 5 (Location):** L 1-2

**Pris:** kr. 65,00

## Short Description

ESP8266 ESP-01 WIFI Wireless Transceiver Send Receive LWIP AP+STA

## Beskrivelse

[Se info her](#)

<https://en.wikipedia.org/wiki/ESP8266>

[ESP8266 kan gå i sovemodus](#)

Esp8266 med

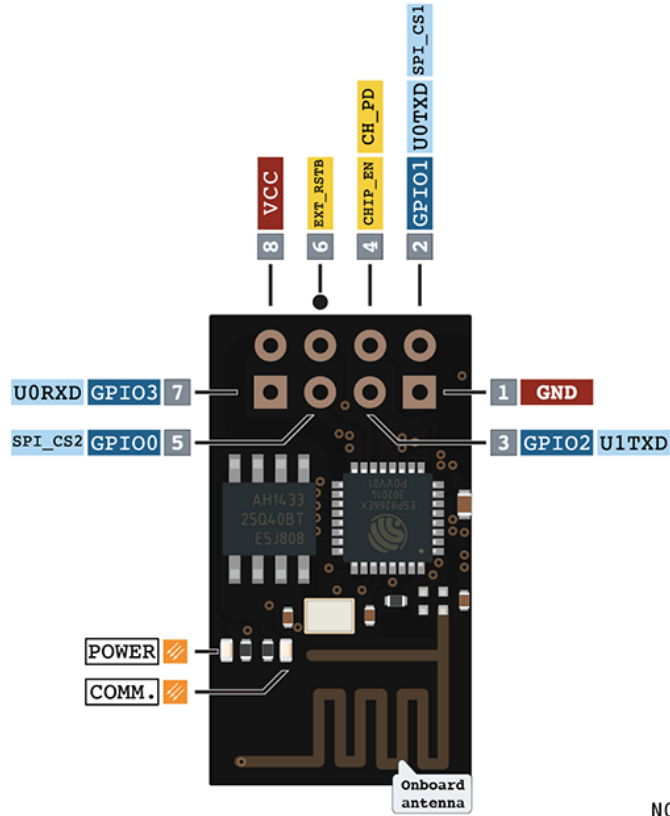
Arduino: <https://www.geekstips.com/esp8266-arduino-tutorial-iot-code-example/>

esp-01, AT-kommandoer for TCP

server/klient-kommunikasjon: <https://youtu.be/01BtAGrSJmc>

## Pinout

# ESP-01 PINOUT



<span style="color: red;">■</span>	POWER	<span style="background-color: black; color: black;">■</span>	SP. FUNCTION(S)
<span style="color: blue;">■</span>	I/O	<span style="background-color: lightblue; color: black;">■</span>	COMM. INTERFACE
<span style="color: green;">■</span>	ADC	<span style="background-color: gray; color: black;">■</span>	PIN NUMBER
<span style="color: yellow;">■</span>	CONTROL		PWM
<span style="background-color: white; border: 1px solid black;">■</span>	N/C		

## NOTES:

- ▲ Typ. pin current 6mA (Max. 12mA)
- ▲ For sleep mode, connect GPIO16 and EXT\_RSTB. On wakeup, GPIO16 will output LOW for system reset.
- ▲ On boot/reset/wakeup, keep GPIO15 LOW and GPIO2 HIGH.