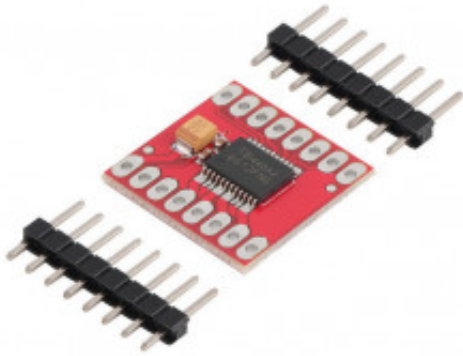


# TB6612FNG Dual DC Stepper Motor Drive Controller - TB432A1



**Produktkode:** 507  
**Tilgjengelighet:** 10  
**Custom Field 5 (Location):** O9

**Pris: kr. 45,00**

## Short Description

Dual DC Stepper Motor Drive Controller Board Module TB6612FNG Replace L298N HC

## Beskrivelse

Driver Bridge H

MODELL: TB6612FNG.

Motordriveren TB6612FNG har to H-broer, kan styre opp til to likstrøms motorer med en konstant strøm på 1,2A (3,2A topp). To inngangssignaler (IN1 og IN2) kan brukes til å styre motoren i en av fire mulige moduser: CW (sving med urviseren), CCW (moturs), kortbrems og stopp. De to motorutgangene (A og B) kan styres separat, Hastigheten til hver motor styres av et PWM-signal med en frekvens på opptil 100 kHz. STBY-knappen når den er satt til HIGH, plasserer motoren i standby-modus. Føreren har interne beskyttelsesdioder.

Modulen tillater også styring av en unipolar eller bipolar trinnmotor. Modulen tillater deg å kontrollere hastighet og rotasjonsretning ved TTL signaler kan fås fra mikrokontrollere og utviklingskort som Arduino, Raspberry Pi og Launchpads av Texas Instruments.

Chip: TB6612FNG (Toshiba)

Kanaler: 2 (støtter 2 DC-motorer eller en motor PAP)

Spenning Strøm (VMOT): 5V - 15V

Spenning drift (VCC): 2.7V - 5.5V

Nåværende kapasitet: 1.2a (topper opp 3A)

Maksimal strømforbruk: 1W

Den har interne beskyttelsesdioder.

Description:

Features:

The TB6612FNG motor driver can control up to two DC motors at a constant current of 1.2A (3.2A peak). Two input signals (IN1 and IN2) can be used to control the motor in one of four function modes - CW, CCW, short-brake, and stop. The two motor outputs (A and B) can be separately controlled, the speed of each motor is controlled via a PWM input signal with a frequency up to 100kHz. The STBY pin should be pulled high to take the motor out of standby mode.CJMCMCU.

Logic supply voltage (VCC) can be in the range of 2.7-5.5VDC, while the motor supply (VM) is limited to a maximum voltage of 15VDC. The output current is rated up to 1.2A per channel (or up to 3.2A for a short, single pulse).

Board comes with all components installed as shown. Decoupling capacitors are included on both supply lines. All pins of the TB6612FNG are broken out to two 0.1" pitch headers; the pins are arranged such that input pins are on one side and output pins are on the other.

Standby control to save power

CW/CCW/short brake/stop motor control modes

Built-in thermal shutdown circuit and low voltage detecting circuit

All pins of the TB6612FNG broken out to 0.1" spaced pins

Filtering capacitors on both supply lines

Specifications:

Power supply voltage: VM=15V max, VCC=2.7-5.5V

Output current: Iout=1.2A(average) / 3.2A (peak)

Net Weight: 5 g

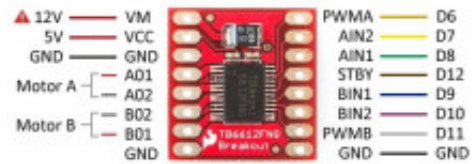
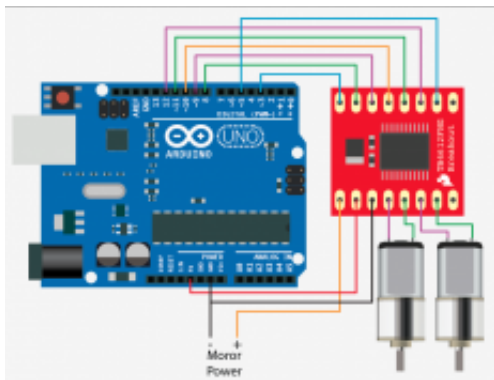
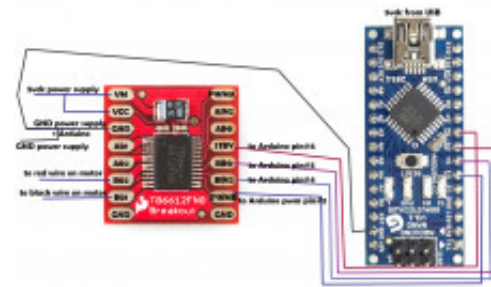
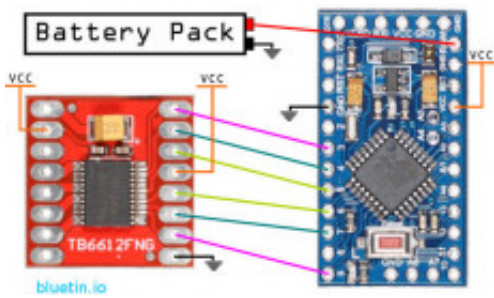
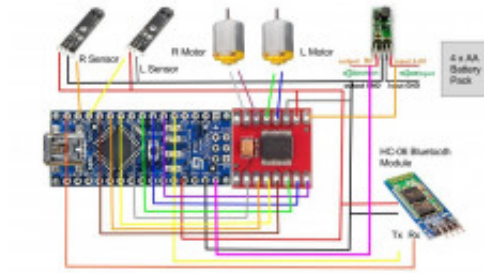
Dimensions: 20mm x 20mm

Color: red

Package Included:

1\* The TB6612FNG motor driver module

# Product Gallery



⚠ Vin entre 5 y 15V. Al usar alimentación externa SIEMPRE poner con GND común.