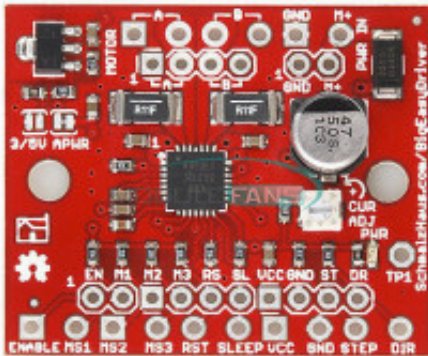


# Big Easedriver adapter 2A



**Produktkode:** 509

**Tilgjengelighet:** 1

**Custom Field 5 (Location):** O3

**Pris:** kr. 140,00

## Short Description

2A phase 3D Printer Big Easy Driver board v1.2 A4988 stepper motor driver board

## Beskrivelse

Each BigEasyDriver can drive up to about 2A per phase of a bi-polar stepper motor. It is a chopper microstepping driver which defaults to 16 step microstepping mode. It can take a maximum motor drive voltage of around 35V, and includes on-board 5V/3.3V regulation, so only one supply is necessary. Although this board should be able to run most systems without active cooling, a heatsink is recommended for loads approaching 2A/phase. You can find the recommended heatsink in the related items below.

Note: The arrow indicators on the current adjustment potentiometer is backwards. Keep this in mind if you're adjusting the current limits.

Note: This product is a collaboration with Brian Schmalz. A portion of each sales goes back to them for product support and continued development.

Features:

Bi-polar Microstepping Driver

2A/Phase Max

Max Motor Drive Voltage: 35V

On-board 5V/3.3V Regulation

Package Include:

1pcs 2A phase 3D Printer Big Easy Driver board v1.2 A4988 stepper motor driver board

## Product Gallery

